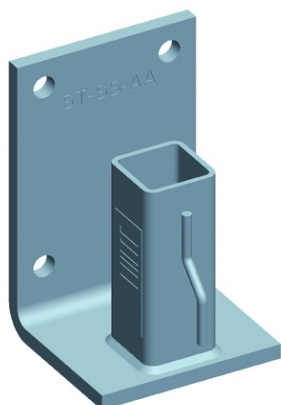


Technical sheet

Ref. 030127

355 L support for square post 300 mm x 300 mm (excluding attachments)



The roof terrace anchors are attached to the acroterion to accommodate the surrounding protection posts.

FEATURES

Support compatible with post 355 and steel handrail 355
Materials compliant with the new NF P 93-355 standard ensuring peripheral safety during insulation and waterproofing operations on flat roofs

SPECIFICATIONS

Length (mm)	95
Width (mm)	100
Height (mm)	155
Weight (kg)	2,2

Technical description

Distance between two supports: 1,5 m

Provided without attachments

Examples of attachments (to be confirmed with attachment manufacturer):

- 2 stainless steel studs HST-R-M10x100 / 30 (Hilti 295 368) - concrete support
- or 2 self-drilling Faynot P13 stainless steel screws 5.5 x 65 - steel support

Actions : To work safely

Trades : Waterproofing